

User Manual

Screen Bridge

KVM SYSTEM Video Processor

Version 1.1

Updated 30/07/2025






Please read this manual prior to installation and operation and save this manual for future reference.


CRALTECH
ELECTRONICA, S.L.

IMPORTANT INFORMATION

WARNING: TO PREVENT FIRE OR ELECTRIC SHOCK, DO NOT EXPOSE THIS APPLIANCE TO RAIN OR MOISTURE

	CAUTION	
RISK OF ELECTRIC SHOCK. DO NOT OPEN.		
CAUTION: TO REDUCE THE RISK OF ELECTRIC SHOCK. DO NOT REMOVE COVER (OR BACK). NO USER-SERVICEABLE PARTS INSIDE. REFER SERVICING TO QUALIFIED PERSONNEL.		

 This symbol is intended to alert the user to the presence of uninsulated "dangerous voltage" within the product's enclosure that may be of sufficient magnitude to constitute a risk of electric shock to persons.

 This symbol is intended to alert the user to the presence of important operating and maintenance instructions in the literature accompanying the product.

SAFETY INSTRUCTIONS

This product has been designed with the highest priority on safety, however, there are basic precautions that should be taken to avoid injury or damage.

- 1) Read, keep and follow all these instructions.
- 2) Water and Moisture. Do not use this product near water and do not expose it to humidity. Keep the unit dry.
- 3) Handle and operate this product with care, and do not expose the unit to vibrations.
- 4) Clean only with dry cloth. Do not use liquid or aerosol cleaners to clean the product, and be sure not to spill liquid of any kind into it. Unplug the power cord before cleaning the product.
- 5) Do not insert anything into or block the ventilation slots, you could get a shock or cause fire.
- 6) Do not remove cover or back to reduce the risk of electric shock.
- 7) Keep the product away from heat sources such as radiators, heat registers, stoves, or other apparatus (including amplifiers) that produce heat.
- 8) Only use accessories specified by the manufacturer.
- 9) Power Sources: This product should be operated only from the type of power source indicated on the marking label. If you are not sure, check with your dealer or contact us for assistance.
- 10) Unplug this apparatus during lightning storms or when unused for long periods of time.
- 11) If any of the following occur, unplug the power cord and seek the assistance of a qualified service personnel for servicing:
 - Power cord or plug becomes damaged.
 - When any liquid is spilled on or in the product.
 - When the product has been exposed to water.
 - When the product does not operate properly as described in the instruction manual.
 - When the product has been damaged in any way.
- 12) Refer all servicing to qualified service personnel. Servicing is required when the apparatus has been damaged in any way.

If the product requires replacement parts, make sure that the service personnel uses replacement parts recommended by the manufacturer. Use of unauthorized parts can result in fire, electric shock, and other damage.

CONTENTS

Front panel and rear connectors 3

Specifications..... 4

Software Manual 5-8

FRONT PANEL AND REAR CONNECTORS



- 1. RS-232 (Factory programmer)
- 2. Ethernet (Control Software and TSL)(**)
- 3. USB connector: Used for updates. (*)
- 4. 4 x Peripherals USB Connectors
- 5. KVM Outputs/inputs

(*);;IMPORTANT!!: Once removed the pendrive from USB connector it is necessary a period of more than 25 seconds before using the USB connector again (in order to get a proper dismantling of the device).

SPECIFICATIONS

ScreenBridge SPECIFICATIONS

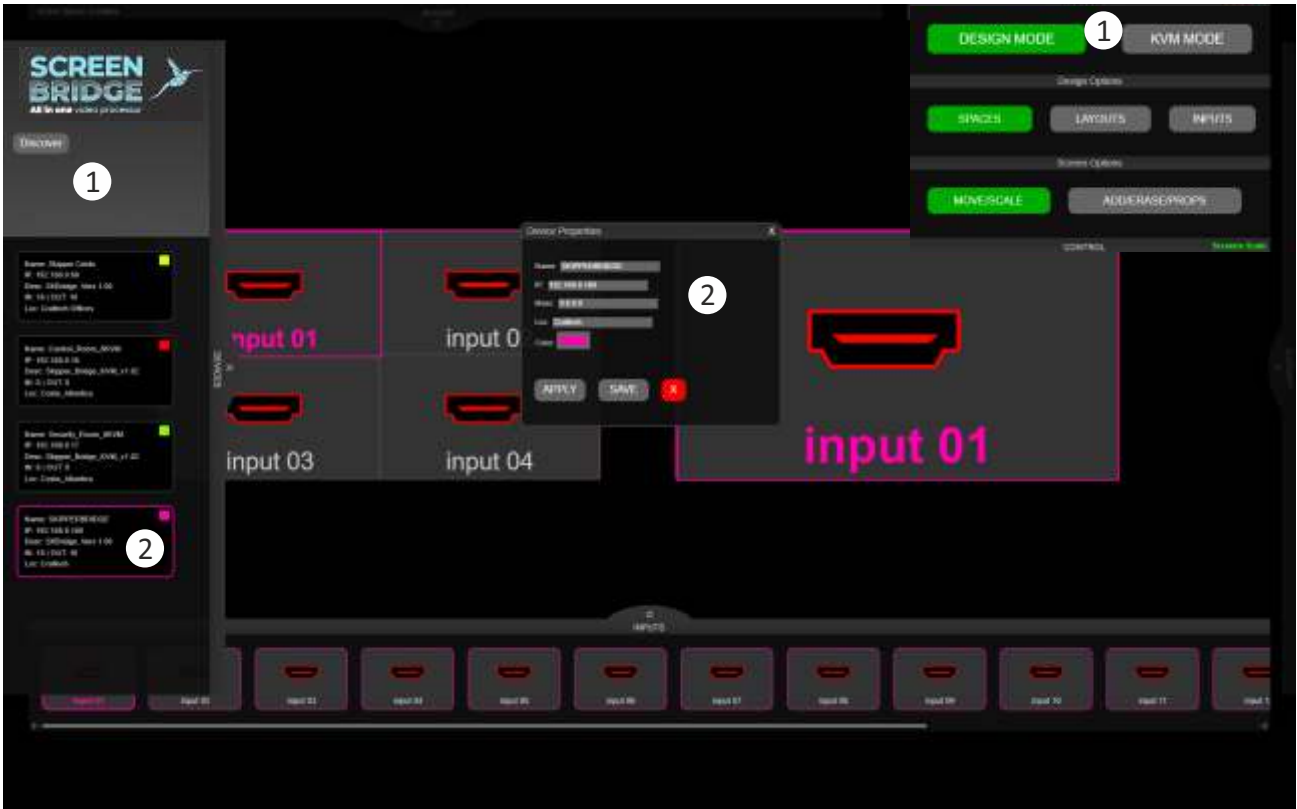
UMD	16 characters (IMD) TSL comp.
Cabinet	Aluminium. Textured Black Powder Coat
Dimensions	133.00 x 440.00 x 250.00 mm (3RU)
Weight	TBD Kg
Power supply	12V DC (XLR Connector)
Power Consumption (Approx.)	110W
Operating temperature	5 °C a 40 °C
HDMI INPUTS	Up to 24 inputs. Each board have 4 inputs and 6 boards can be mounted on ScreenBridge
HDMI Outputs	Up to 24 x HDMI outputs. Each board have 4 outputs and 6 boards can be mounted on ScreenBridge. Supported resolutions: 1080i (50Hz / 60Hz), 1080p (25Hz / 30Hz / 50Hz / 60 Hz), 1 input of each board can be 4K UHD (25Hz / 30Hz / 50hz* / 60Hz*)
Remote Control	Ethernet Connector
USB connector	Updates

HDMI INPUTS SPECIFICATIONS

HDMI Inputs	
HDMI Inputs Formats	1080p (60 / 59.84 / 50 / 30/ 29.97 /25 / 24 / 23.98 / 25sF / 24sF/ 23.98sF) 1080i (60 / 59.94 / 50), 720p (60 / 59.94 / 50)
Aspect Ratio	16.9, 4:3
UMD	16 characters (IMD)

(*) Our HDMI Inputs do not accept HDCP signals.

SOFTWARE MANUAL

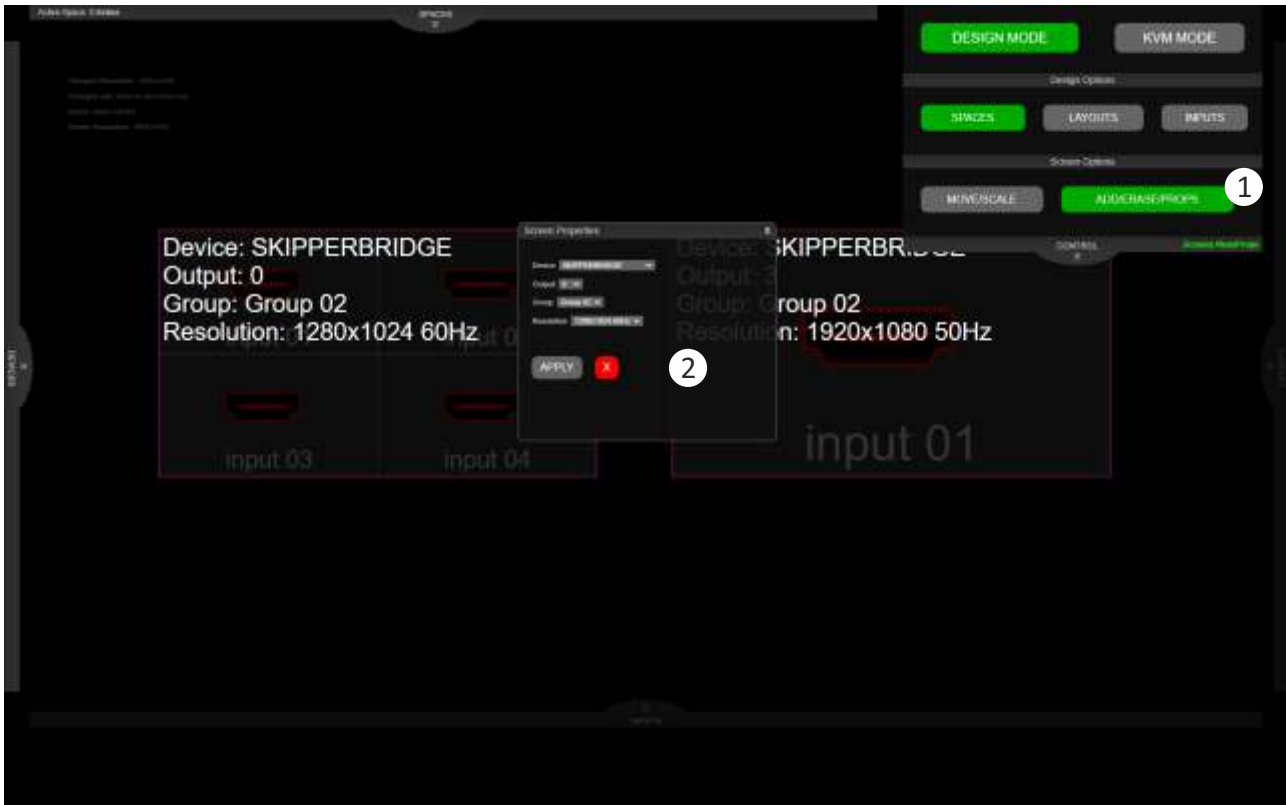


- 1 - Click the control tab, Click Design MODE and Discover your devices
- 2 - Click on the device to edit the properties (Name, IP, Mask, Location and Color)

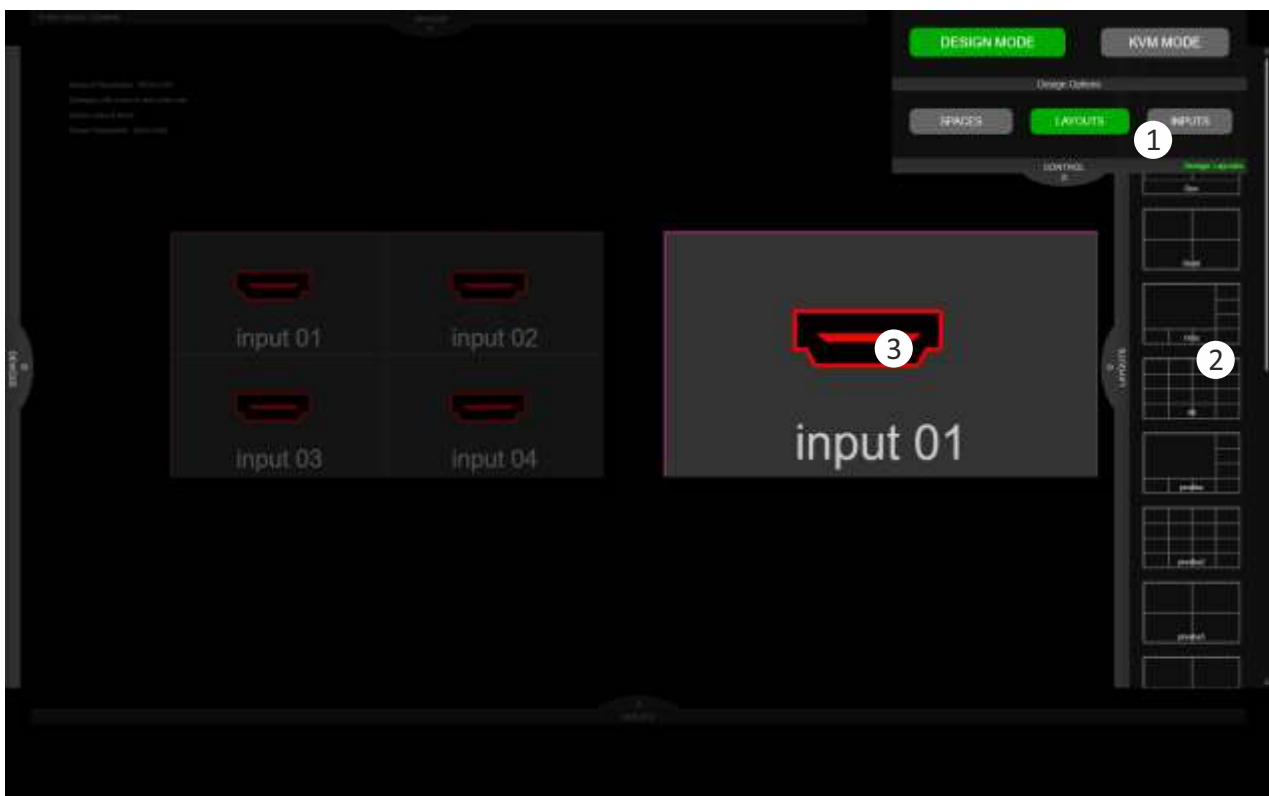


- 1 - Create a new space and add your devices to design your workstation (Add the screens you need assigned to each device and save the space, ...)
- 2 - You can move the screens by clicking and dragging and resize them to make your design by drag and dropping the corners.

SOFTWARE MANUAL



- 1 - ADD / DELETE or EDIT the screens.
- 2 - Click on the screens to set and check the properties.

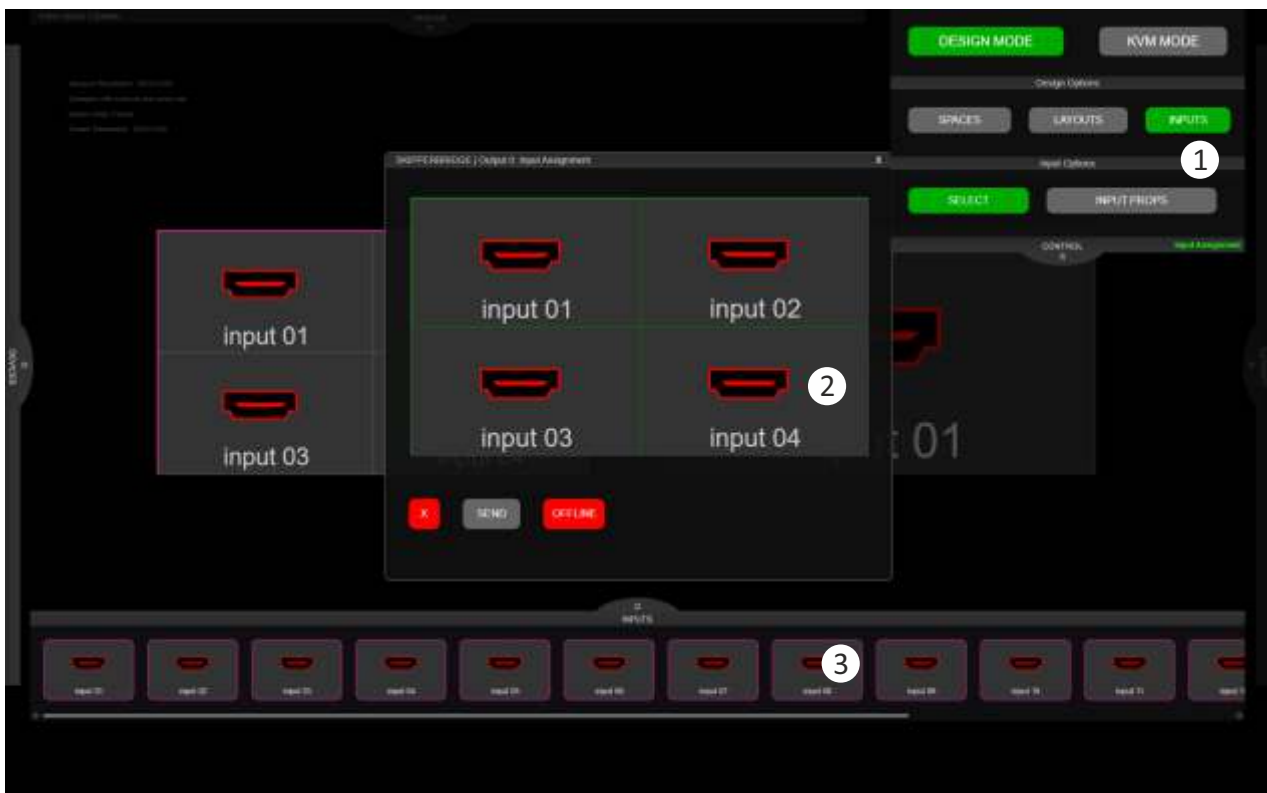


- 1 - Select the option LAYOUT to change the layouts of your screens
- 2 - You have multiple templates to assign to your screens
- 3 - Click the screen you want to change the layout and choose one of the templates



1 - While being on the LAYOUT option, Click the screen that you want to change the layout and assign one from the templates

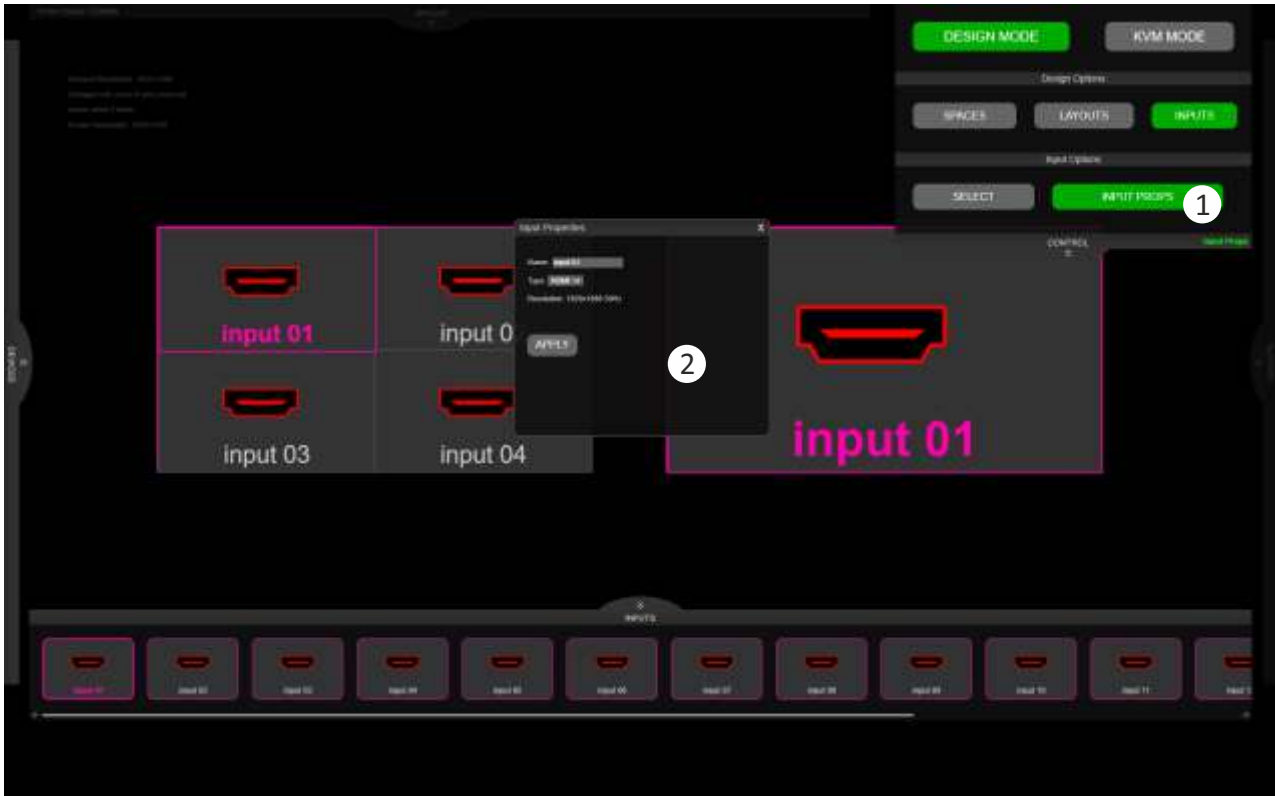
2 - Click on which template you want to use and save the layout for the screen selected



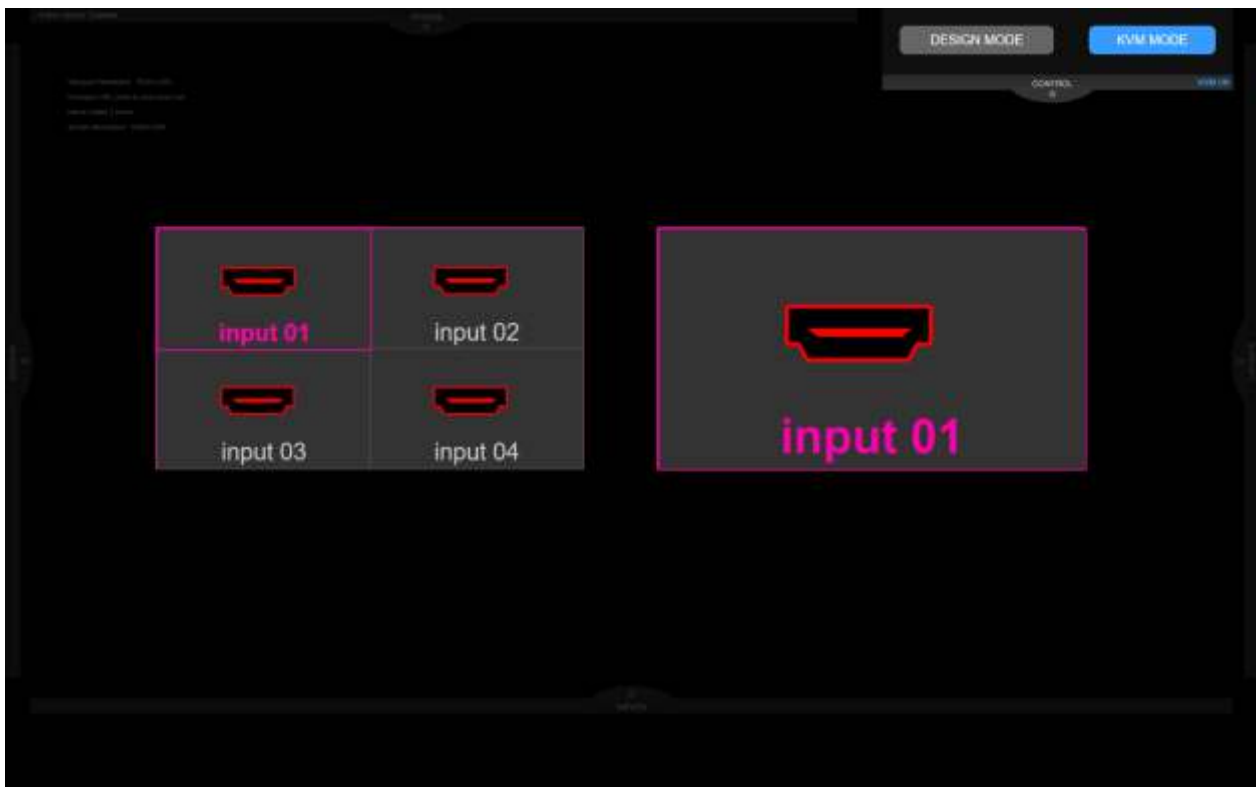
1 - Select the option INPUTS to assign the inputs to your screen layouts

2 - Click the screen you want to manage and click the input you want to add or change

3 - Select from all the available inputs the one you want to route on the screen layout



- 1 - Click the option INPUT PROPS to check and edit the properties of your inputs
- 2 - Click on the input that you want to check



- 1 - Switch to KVM MODE and select the input you want to control by clicking on it