

User Manual

4K Colibrí - HDMI Quad Split KVM

Version 1
Updated 20/10/2023



Please read this manual prior to installation and operation and save this manual for future reference.

CRALTECH
ELECTRONICA, S.L.

Thank You for Choosing Craltech technology

We expect you enjoy your choice.

Feel free to:

1. Contact us if you need support during configuration
2. Share your feedback, project pictures and your additional needs or desired features with us
3. Share your experience at social media using *#craltech*

Your opinion matters and is important!

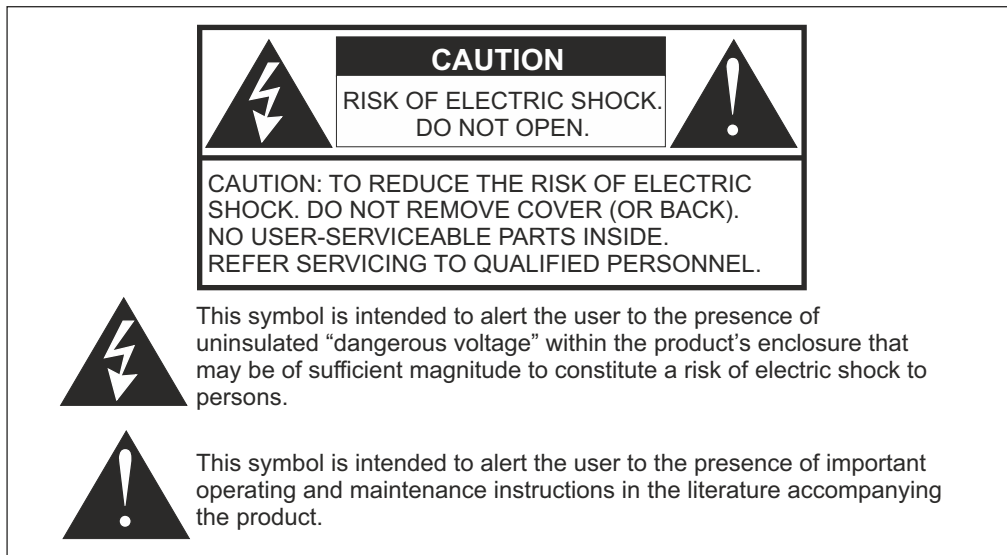
So if you want to suggest further features that could be included on the product or if anything at all with your craltech experience does not live up to your expectations be sure to reach out to us at *support@craltech.com*.

A handwritten signature in black ink that reads "Craltech Team". The signature is written in a cursive, flowing style.

Laura Campoy
CEO, Craltech
craltech@craltech.com

IMPORTANT INFORMATION

WARNING: TO PREVENT FIRE OR ELECTRIC SHOCK, DO NOT EXPOSE THIS APPLIANCE TO RAIN OR MOISTURE



SAFETY INSTRUCTIONS

This product has been designed with the highest priority on safety, however, there are basic precautions that should be taken to avoid injury or damage.

- 1) Read, keep and follow all these instructions.
- 2) Water and Moisture. Do not use this product near water and do not expose it to humidity. Keep the unit dry.
- 3) Handle and operate this product with care, and do not expose the unit to vibrations.
- 4) Clean only with dry cloth. Do not use liquid or aerosol cleaners to clean the product, and be sure not to spill liquid of any kind into it. Unplug the power cord before cleaning the product.
- 5) Do not insert anything into or block the ventilation slots, you could get a shock or cause fire.
- 6) Do not remove cover or back to reduce the risk of electric shock.
- 7) Keep the product away from heat sources such as radiators, heat registers, stoves, or other apparatus (including amplifiers) that produce heat.
- 8) Only use accessories specified by the manufacturer.
- 9) Power Sources: This product should be operated only from the type of power source indicated on the marking label. If you are not sure, check with your dealer or contact us for assistance.
- 10) Unplug this apparatus during lightning storms or when unused for long periods of time.
- 11) If any of the following occur, unplug the power cord and seek the assistance of a qualified service personnel for servicing:
 - Power cord or plug becomes damaged.
 - When any liquid is spilled on or in the product.
 - When the product has been exposed to water.
 - When the product does not operate properly as described in the instruction manual.
 - When the product has been damaged in any way.
- 12) Refer all servicing to qualified service personnel. Servicing is required when the apparatus has been damaged in any way.

If the product requires replacement parts, make sure that the service personnel uses replacement parts recommended by the manufacturer. Use of unauthorized parts can result in fire, electric shock, and other damage.

CONTENTS

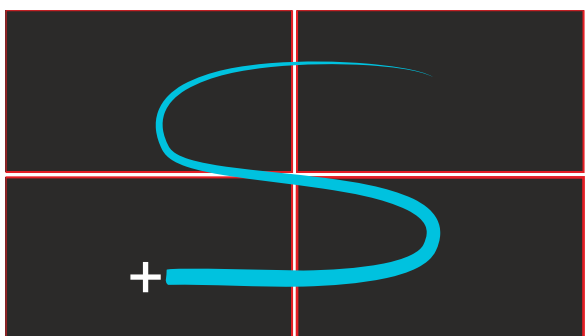
Controls and Connectors	3
Surfing between signals and full screen configurations	3
On Screen Menu	4
Cascade	4
Audio	5
Inputs	5
Config	6
Network	7
System	8
Stream deck configuration.....	9
Specifications.....	10

CONTROLS AND CONNECTIONS



1. **HDMI / KVM Inputs:** 4 x HDMI Inputs up to Full HD resolution (NO HDCP) and 4 x KVM inputs
2. **HDMI Output:** Up to 4K UHD 60hz and **RJ-11** KVM infinity Cascade input
3. **Ethernet connector for remote control** and **RJ-11** KVM infinity Cascade output (6P4C min 4-wire type)
4. **USB connector for updates** and **USB-B** infinity Cascade input
5. **Audio Output** and **KVM Mouse/keyboard** input
6. **DC in:** 12V and **KVM Mouse/keyboard** input
7. **ON / OFF** mini switch
8. **Menu encoder** (Click to access menu and keep press to ESC) (For forcing resolution change keep pressing encoder when being outside the menu until you see image on screen and you can then change it using the menu System > output resolution)

SURFING BETWEEN SIGNALS AND FULL SCREEN CONFIGURATIONS



1 - Connect the **Pc's** to the **HDMI Inputs** and **KVM connectors**

2 - Connect Mouse and Keyboard to **4K Colibrí mouse/keyboard inputs**

3 - Surf easily between the **4 windows / sources**

4 - **One LEFT click** for just control the selected source, **Double LEFT click** to full screen and control same time.

5 - **Double RIGHT click** for stop controlling and go back to Quad configuration for being able to surf again and select a new source to control.

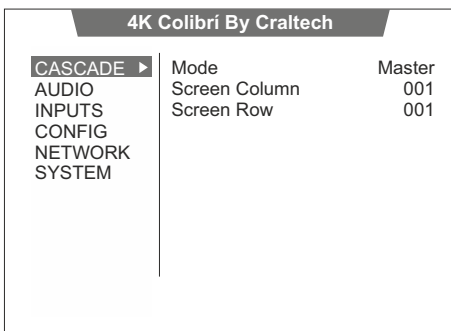
6 - If multiple **4K Colibrí** are in cascade, feel free to surf between all of them.

ON SCREEN MENU

- **CASCADE:** Mode / Screen Column / Screen Row
- **AUDIO:** Audio output / Audio Mode / Speakers Channels / Jack Volume
- **INPUTS:** Select an Input / KVM / UMD / Display UMD / UMD Size / Aspect Ratio / Image Size / Image XY Position
- **CONFIG** Layout / KVM Out / Format Info / Border Color / UMDs Color
- **NETWORK:** LAN IP / IP MASK / GATE IP / Apply Config / Default Config
- **SYSTEM:** Out Resolution / Save UMDs / OSD Size / OSD H & V Position / Factory Default / Update Firmware

CASCADE MENU

First of all connect the **KVM infinity Cascade RJ-11** (6P4C min 4-wire type) **input and output** cables and the **USB-B infinity cascade** cables between every 4K Colibrí for having all them connected in serie. Then setup **master and slave** in each 4K Colibrí and adjust their position on your monitor wall with the following options.



1. Select the **Cascade** menu and press the encoder to enter.
2. Press Menu Encoder to select the adjustment to be modified (adjustment will be marked in white), and use the encoder to adjust the value. Press Menu Encoder again to Exit adjustment (adjustment will be marked in grey), and continue navigating.
3. Long press Encoder to **ESC** and move back to main menu.

Mode

Used to select the Mode that the unit will be working when cascading (Options are: OFF, MASTER, SLAVE)

Screen Column

Used to select the **Column** position from the monitor were the 4K Colibrí is connected on your monitor setup. (When cascading this must be configured, **there is no negative numbers** so position your master in a higher value to be able to have monitors right / left / up / down if you want to position master on the center.

Screen Row

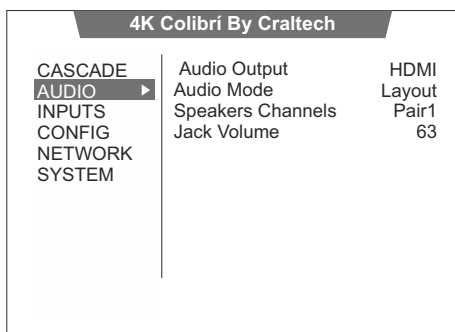
Used to select the **Row** position from the monitor were the 4K Colibrí is connected on your monitor setup. (When cascading this must be configured, **there is no negative numbers** so position your master in a higher value to be able to have monitors right / left / up / down if you want to position master on the center.

POSITION EXAMPLE

<p>SLAVE</p> <p>Screen column 001 Screen Row 001</p>	<p>SLAVE</p> <p>Screen column 002 Screen Row 001</p>	<p>SLAVE</p> <p>Screen column 003 Screen Row 001</p>
<p>SLAVE</p> <p>Screen column 001 Screen Row 002</p>	<p>MASTER</p> <p>Screen column 002 Screen Row 002</p>	<p>SLAVE</p> <p>Screen column 003 Screen Row 002</p>
<p>SLAVE</p> <p>Screen column 001 Screen Row 003</p>	<p>SLAVE</p> <p>Screen column 002 Screen Row 003</p>	<p>SLAVE</p> <p>Screen column 003 Screen Row 003</p>

ON SCREEN MENU

AUDIO MENU



1. Select the **AUDIO** menu and press the encoder to enter.
2. Press Menu Encoder to select the adjustment to be modified (adjustment will be marked in white), and use the encoder to adjust the value. Press Menu Encoder again to Exit adjustment (adjustment will be marked in grey), and continue navigating.
3. Long press Encoder to **ESC** and move back to main menu.

AUDIO OUTPUT

Used to select the audio output (Jack, HDMI)

AUDIO MODE

Used to select the audio mode (per input, QUAD, LAYOUT (Layout will adapt the audio out depending on the input))

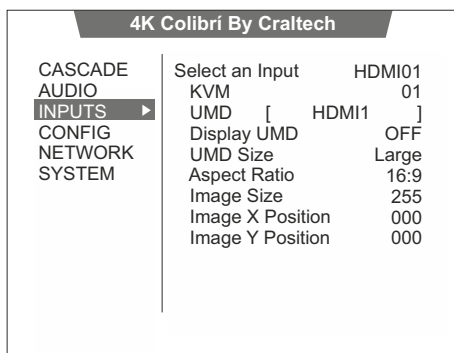
SPEAKERS CHANNELS

Used to select the audio channels (pair) of the audio output (Speakers and Phone Jack).

JACK VOLUME

Used to adjust the audio volume of the audio output (Phone Jack and speakers).

INPUTS MENU



1. Select the **INPUT** menu and press the encoder to enter.
2. Press Menu Encoder to select the adjustment to be modified (adjustment will be marked in white), and use the encoder to adjust the value. Press Menu Encoder again to Exit adjustment (adjustment will be marked in grey), and continue navigating.
3. Long press Encoder to **ESC** and move back to main menu.

SELECT AN INPUT

Used to select the input which that is going to be modified.

KVM

Used to select the KVM output that the input is working with.

UMD

16 character UMD per input.

1. Select the **Input NUMBER** to be modified and press the encoder to enter.
2. Use the Encoder up and down to modify value.
3. Press Menu Encoder again to Exit adjustment.

Display UMD

Display the UMD of the selected input

UMD Size

Select the size of the UMD (Normal or Large)

ASPECT RATIO

Used to select **Aspect Ratio**. Values are 4:3 and 16:9.

IMAGE SIZE

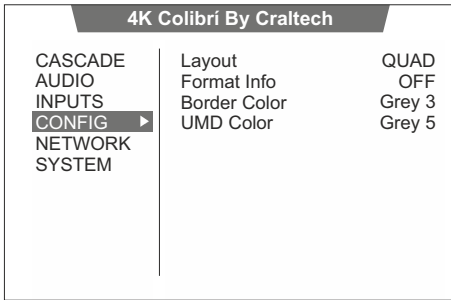
Used to modify image size. Image Size can be modified in Full screen view and in Quad Mode.

IMAGE X/Y POSITION

Used to modify image position.

ON SCREEN MENU

CONFIG MENU



1. Select the **CONFIG** menu and press the encoder to enter.
2. Press Menu Encoder to select the adjustment to be modified (adjustment will be marked in white), and use the encoder to adjust the value. Press Menu Encoder again to Exit adjustment (adjustment will be marked in grey), and continue navigating.
3. Long press Encoder to **ESC** and move back to main menu.

LAYOUT

Used to select a screen layout. Options are: Quad View, HDMI 1, HDMI 2, HDMI 3, HDMI 4

FORMAT INFO

Used to Enable/Disable visualization of source's format information (resolution). This information will be displayed in right-up corner of the image.

BORDER COLOR

Used to select color of Border/Frame of the image in Quad View.

UMD COLOR

Used to select UMD color

ON SCREEN MENU

NETWORK MENU

4K Colibrí By Craltech		
CASCADE	LAN IP	127.000.000.002
AUDIO	IP MASK	255.255.255.000
INPUTS	GATE IP	127.000.000.001
CONFIG	Apply Config	NO
NETWORK ▶	Default Config	NO
SYSTEM		

1. Select the **NETWORK** menu and press the encoder to enter.
2. Press Menu Encoder to select the adjustment to be modified (adjustment will be marked in white), and use the encoder to adjust the value. Press Menu Encoder again to Exit adjustment (adjustment will be marked in grey), and continue navigating.
3. Long press Encoder to **ESC** and move back to main menu.

LAN IP

This option is used to modify LAN IP.

1. Select **LAN IP** adjustment and press the encoder to enter.
2. Use the Encoder up and down to modify values.
3. To apply the new Network configuration Select "Yes" at Apply Config in Network Menu, and unplug (not stand by) the equipment.

IP MASK

This option is used to modify IP MASK.

1. Select **IP MASK** adjustment and press the encoder to enter.
2. Use the Encoder up and down to modify values.
3. To apply the new Network configuration Select "Yes" at Apply Config in Network Menu, and unplug (not stand by) the equipment.

GATE IP

This option is used to modify GATE IP. GATE IP is the router LAN IP.

1. Select **GATE IP** adjustment and press the encoder to enter.
2. Use the Encoder up and down to modify values.
3. To apply the new Network configuration Select "Yes" at Apply Config in Network Menu, and unplug (not stand by) the equipment.

Apply Config

This option is used to apply all the modifications/values of the Network Menu, so after modifying a value of any of the adjustments of the Network Menu select "Yes" at Apply Config and unplug (not stand by) the equipment to apply the new network configuration.

Default Config

This option is used to set to default (factory settings) the monitor.

ON SCREEN MENU

SYSTEM MENU

4K Colibrí By Craltech		
CASCADE	Out Resolution	1080p60Hz
AUDIO	Save UMDs	No
INPUTS	OSD Size	Small
CONFIG	OSD H Position	000
NETWORK	OSD V Position	000
SYSTEM	Factory Default	NO
	Update Firmware	NO

1. Select the **SYSTEM** menu and press the encoder to enter.
2. Press Menu Encoder to select the adjustment to be modified (adjustment will be marked in white), and use the encoder to adjust the value. Press Menu Encoder again to Exit adjustment (adjustment will be marked in grey), and continue navigating.
3. Long press Encoder to **ESC** and move back to main menu.

EQUIPMENT ID

Used to set Equipment ID to identify it for Ethernet communications.

For TSL, the equipment ID is the Offset on the first UMD and Tally that will be used.

For example: To control 2 equipments with 8 inputs, first equipment will have ID 01 and the second equipment will have ID 09.

ENCODER SENSITIVITY

Used to adjust sensitivity of the encoder.

OSD SIZE

Used to select OSD size. Values are: Small, Large

OSD H/V POSITION

Used to select OSD position.

OSD TRANSPARENCY

Used to select OSD Transparency.

FACTORY DEFAULT

This option is used to reset the monitor. **NOTE: This option will set Equipment ID to 01 (Factory value).**

UPDATE FIRMWARE

Used to update the monitor.

How to control 4K Colibrí with Stream deck

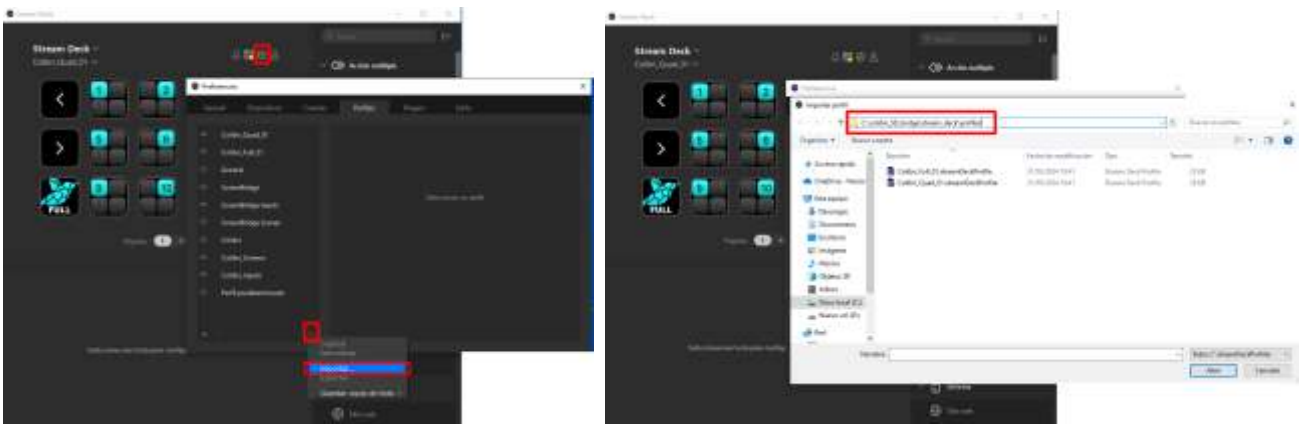
- 1- Download and install control software (www.craltech.com/soft/colibri_SD_bridge.exe)
- 2- Configure network on your 4K Colibrí on OSD menu **NETWORK > IP and Gateway, APPLY** by pressing encoder and verify connection is working by making a ping on the CMD console to the 4KColibrí IP.
- 3- Modify the 4K Colibrí (Master one if you use in cascade) IP on the file `c:\colibri_SD_bridge\node-server\serverip.txt`
- 4- Open software **colibri_SD_Bridge** and keep the **CMD window** that create the webserver **OPENED** during all the usage.

colibri_SD_bridge software already install and include **2 templates/exemples** for stream deck profile of **15 keys (5x3 stream deck)**. ■

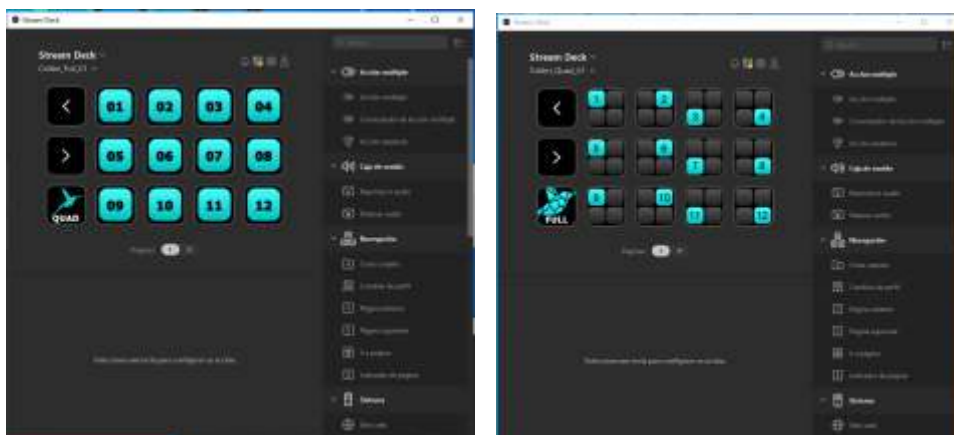


To **import that profiles** directly to your stream deck designer PC app follow the following steps:

- 1- Click on the configuration icon and click the down arrow to import the profiles you desire.
- 2- Search the address that has the 2 templates at `c:\colibri_SD_bridge\stream_deck\profiles` and import the 2 template profiles



After importing the profiles you can access them through your stream deck. The 2 profile templates are for quad configurations and full screen configurations with direct control of the KVM. (Swap between the profiles by pressing the FULL and QUAD icon key)



If you have an smaller or different streamdeck these templates will be not well adjusted so you will have to readapt them as there will be missing buttons.

If you need assistance while configuring please contact support@craltech.com and you can check a working video at <https://www.instagram.com/p/C8fBTK4jpfq/>

SPECIFICATIONS

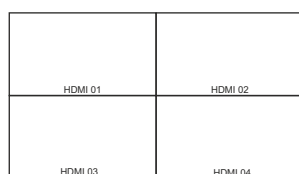
4KColibrí SPECIFICATIONS

UMD	16 characters (IMD)
Cabinet	Aluminium. Textured Black Coat
Dimensions	146.00 x 106.00 x 43.00 mm
Weight	600 gr
Power supply	12V DC
Power Consumption (Approx.)	10W
Operating temperature	5 °C a 40 °C
KVM	4 x KVM connectors, 1 KVM Cascade in and 1 out and a KVM USB-B Output
HDMI Output	1 x HDMI. Supported resolutions: 1080i (50Hz / 60Hz), 1080p (25Hz / 30Hz / 50Hz / 60Hz), 4K UHD (25Hz / 30Hz / 50Hz / 60Hz)
Remote Control	Ethernet Connector
USB connector	Updates
Rj11 KVM cascade infinity IN / OUT	6P4C min 4-wire type

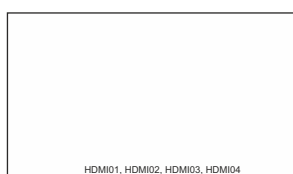
INPUTS

HDMI Inputs Formats	1080p (60 / 59.84 / 50 / 30/ 29.97 / 25 / 24 / 23.98) 1080i (60 / 59.94 / 50), 720p (60 / 59.94 / 50)
Aspect Ratio	16.9, 4:3
Audio IN	Embedded Audio.8 Channels Audio Level Meters
UMD	16 characters (IMD)

SCREEN CONFIGURATIONS



QUAD



FULL