

SCREEN BRIDGE

All in one video processor



All in One Video Processor

Matrix, Switcher, Multiviewer & KVM Control



CRAITECH
BROADCAST | MONITORS | MULTIVIEWERS

Switching, Distribution, Monitoring & Control Multiple Sources



All in One Video Processor

Matrix, Switcher, Multiviewer, KVM, and VideoWall Options

Introducing ScreenBridge, the revolutionary All-in-One Video Processor. Designed with cutting-edge Matrix, Switcher, Multiviewer, KVM, and VideoWall options, it delivers unparalleled performance.

Seamlessly select and upload a MOD, effortlessly controlling and managing all your sources. With comprehensive features and uncompromising solutions, ScreenBridge empowers high-end staging and premium system integration.

Its robust and stable design ensures scalability, making it perfect for large control rooms, government institutions, mission-critical environments, conference rooms, live events, corporations, and sports.

Discover the limitless potential of ScreenBridge modular system, empowering you to design and build your own tailored solution. With versatile I/O cards accommodating various connectivity requirements, customization has never been easier.

Choose from ScreenBridge models offering up to 16 inputs and 16 outputs (2U) or 24 inputs and 24 outputs (3U). Depending on the MOD installed, these configurations can be effortlessly adapted for single screens, Multiviewer, or KVM options. The ScreenBridge Processor System offers complete flexibility, ensuring it can be fully customized to match the unique requirements of any project or event.

Discover limitless possibilities with ScreenBridge—a future-proof solution that guarantees unmatched versatility and innovation and maximize your potential.

Unlimited High Quality Possibilities

Matrix, Switcher, Multiviewer & KVM Control

MULTIVIEW LAYOUT & FULL SCREEN

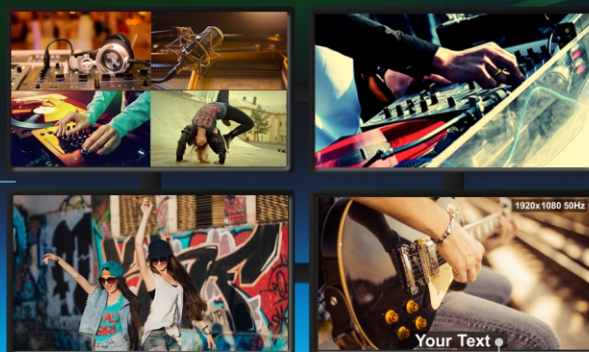
1920 x 1080 Resolution



1920 x 1080 Resolution

QUAD SPLIT & FULL SCREEN

1920 x 1080 Resolution



Source Information

Your Text

16 Character Text

4K MULTIVIEW

3840 x 2160 Resolution



1920 x 1080 Replica



Output NOT Available

Output NOT Available

QUAD SPLIT

1920 x 1080 Resolution



4K MULTIVIEW

Input Boards
With 4 x HDMI
Connectors

Output Boards
With 4 x HDMI Connectors
Connector 1 supports up to 4K



Easy and Quick Control of all your HDMI sources with same Mouse & Keyboard

Experience the versatility of the ScreenBridge Multiview MOD, offering a unique dual feature for both traditional matrix viewing and customizable layouts with your sources. Whether you prefer a full image, a Quad-Split, or a Multiview Layout, ScreenBridge enables you to display them effortlessly on any screen.

As your needs evolve, the ScreenBridge grows with you, allowing seamless upgrades and refits in the future. This not only provides cost savings but also ensures continuity and familiarity with the system.



ScreenBridge is the ultimate solution for large monitoring projects, enabling you to switch a standard single image on any screen effortlessly. With two models available (16 Inputs/Outputs in a 2U form factor and 24 Inputs/Outputs), the input signal is automatically detected and can be routed to any output using our high-quality 10-bit image processing engine.

KVM

Experience full and total control with no more than 2/3 gestures. Effortlessly view and switch between sources on any screen using mouse and keyboard control. Simplify your workflow and maximize efficiency with the ScreenBridge KVM MOD.



Use multiple screens to display one of your signals. Customize the size and correct edge bezels to achieve the perfect visual display. With just one ScreenBridge unit, you can effortlessly manage multiple video walls.

ScreenBridge utilizes FPGA (Field Programmable Gate Array) technology as a hardware-based solution. Its high-performance scaling engine and 10-bit processing guarantee state-of-the-art image quality and maximum reliability.



Flexible and Modular design

Display and control up to 24 Inputs and 24 Outputs with two versions available

ScreenBridge is specifically designed and manufactured to deliver the highest standards in critical applications and projects.

With a modular design, and high quality European manufacturing process, includes features as redundant power supplies and thermal management to deliver uninterrupted 24/7 performance in a light weight aluminium design chassis of 2U.

The modular system of ScreenBridge allows to design and build your own solution, with I/O cards to accommodate a variety of connectivity requirement.

With a scalable design, each ScreenBridge features up to 16 x 16 inputs and outputs in a 2U Frame or 24 x 24 in 3U.

Each Output can be configured as single screen, or Multiviewer, using our 10 bit high-performance scaling engine designed with FPGA (Field Programme Gate Array) technology .

“Uninterrupted 24/7 performance and maximum reliability”



Up to **16 x 16** Version



Up to **24 x 24** Version

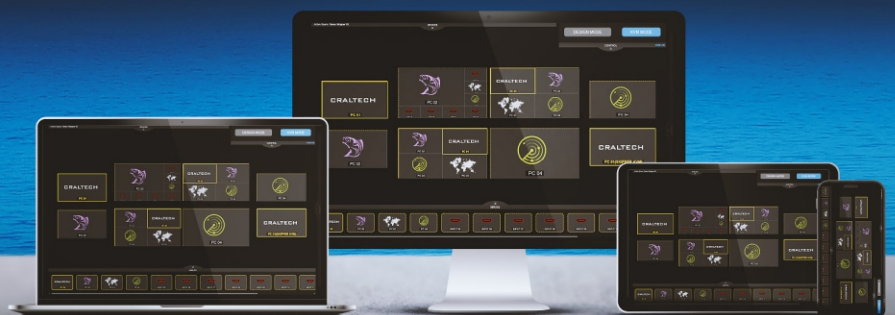
ScreenBridge

CONTROL SOFTWARE

Take advantage of our free Web-Based Remote Control Software (SNMP compatible) to quickly and conveniently control all functions. Whether you are using a PC, laptop, or tablet, the ScreenBridge ensures seamless management of your monitoring system.

Experience unparalleled versatility and control with ScreenBridge today.

FAST & EASY Control all your Craltech products



EXPAND YOUR POSSIBILITIES

Full control of your workstation from anywhere!

Specifications

Video Inputs	Up to 16 in CSB16 and up to 24 in CSB24
3G-SDI	SMPTE 424M-2006 Level A, Format 1920x1080 (60, 59.94, 50) Cable length 85m Belden 1694A, BNC connector
HD-SDI	SMPTE 274M and SMPTE 296M, Formats 1080p (30, 29.97, 25, 24, 23.98, 30PsF, 29.97PsF, 25PsF, 24PsF, 23.98PsF) 1080i (60, 59.94, 50), 720p (60/59.94/50/30/29.97/25/24/23.98) Cable length 100m Belden 1694A, BNC connector
SD-SDI	SMPTE 125M/259M, Formats 480i (59.94), 576i (50) Cable length 250m Belden 1694A, BNC connector
HDMI	1080p (60 / 59.94 / 50 / 30 / 29.97 / 25 / 24 / 23.98 / 25sF / 24sF / 23.98sF) 1080i (60 / 59.94 / 50), 720p (60 / 59.94 / 50)
Video Outputs	Up to 16 x HDMI in CSB16 and up to 24 x HDMI in CSB24 Output 1 of each CSB-HD4OUT can display a 4K Output (50,60,25,30) In FHD all 4 x BNC connectors of each CSB-HD4OUT can display 1080p (25, 30, 50)
KVM Outputs	Each CSB16 and CSB24 can have up to 16 x USB Output connectors (Up to 16 USB signals)
KVM Inputs	4 x USB (Mouse and Keypad)
Ethernet	RJ-45 Connector
USB Connector	Upgrades
Chassis	Aluminium. Black Coat
Dimensions	CBS16: 440 x 88 x 247 mm (2RU), CBS24: 440 x 133 x 247 mm (3RU)
Power supply	12V DC
Power consumption	TBD

Reference List:

CBS16: 16 x 16 Input/Output Chassis (2U)
 CBS24: 24x 24 Input/Output Chassis (3U)
 CSB-HD4IN: 4 x HDMI Input board
 CSB-HD4OUT: 4 x HDMI Output board
 CSB-3G4IN: 4 x 3G SDI Input board
 CSB-4KVM: 4 x KVM Output board

More info at:
www.craltech.com



CRALTECH
BROADCAST | MONITORS | MULTIVIEWERS

Headquarters:
 Plaza del Vapor, 5-6C Pol. Ind. Les Guixeres
 08915 - Badalona (Barcelona) Spain
 Tel +34 93 465 74 04
 Email: craltech@craltech.com