

Pluma
B R I G H T

27" 4K Production Monitor

12G SDI | HDR | 800 Nits



27" HDR PREMIUM BROADCAST MONITOR

Ultra-Bright, Powerfull and Stunning color reproduction

CM270P4K is a versatile professional Monitor designed to fit any production scenario. Featuring 800 nits bright and ultra-light weight aluminium design, this monitor is the best solution for any broadcasting video application.

The CM270P4K features 2 x 12G/3G/HD/SD SDI with active loops through, 2 x 3G/HD/SD SDI Input connectors and 2 x 3G/HD/SD SDI BNC connectors free configurable as inputs or active loops through. With QUAD Mode, use this capability to display 4 SDI sources at same time. The monitor integrates an HDMI input too, offering maximum flexibility.

With our superior quality 12 bit image processing engine, 10 bit panel, HDR visualization options and 3D LUT color management options the monitor offers accurate reproduction of all standard sources.

The rugged and lightweight aluminium design and wide viewing angles display, makes them easy to integrate, and our energy-efficient board design and LED backlight grant low temperature while working.

QUAD VIEW



* CM185P Monitor

Configurable SDI Connectors

PLUMA Monitors integrate 4 x BNC SDI connectors. Connectors 2 and 4 can be set as Inputs or as Outputs. Select to use them as inputs and display on screen 4 x 3G SDI inputs in QUAD VIEW LAYOUT. With maximum flexibility, cuadrant 4 can be configured to display SDI Input 4 or the HDMI source.

Features:

- 2 x 12G/HD/SD-SDI Inputs with Active Loops Through
- 2 x 3G/HD/SD-SDI Autosensing inputs & 2 x 3G/HD/SD-SDI free configurable as Input or Outputs
- 1 x HDMI Input, and SFP Slot
- LED Backlight (reduced power consumption)
- 12 bit video processing engine
- 3840 x 2160 resolution and Brightness: 800 cd/m²
- Wide viewing angle
- 3D LUT for color management. Rec709, EBU, SMPTE-C, BT.2020, DCI and custom color spaces.
- Cost-effective HDR pre-visualization. Preview modes: HLG, PQ, SLOG
- Quad Mode visualization
- Brightness, Contrast, Saturation adjustment
- Colour temperature adjustment and Gamma correction
- Blue Only / Monochrome
- Aspect Ratio Selection (4:3, 16:9)
- Markers and safety areas
- ATC Time code (SDI)
- Backlight adjustment
- Stereo Speakers Audio output
- No audio, Silence, No input and Black image on screen alarms
- Real time colour Waveform and Vectorscope
- 16 Channel Audio Level Meters
- 16 characters UMD and video format information
- Tally and UMD, TSL 3.1 and 5.0 compatible
- Quick control: Easy to use double function keyboard with 5 user configurable direct keys and encoder
- Free user friendly control software (SNMP compatible)
- Rugged and lightweight aluminium design

CM270P4K

12G SDI Professional Monitor build-in Quad Split

ALL THE PROFESSIONAL FEATURES YOU NEED

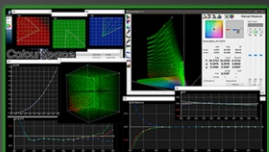


Pluma monitors have all professional features and adjustments as UMD and Tally, Blue Only, Aspect Ratio Selection, Markers, Real time color Waveform and Vectorscope per input (SDI 1 and SDI2), 16 Channel Audio Level Meters, Alarms, Timecodes, backlight and color temperature adjustment (5600K, 6500K, 9300K, and RGB Gain and Bias adjustment), and more.

HDR & 3DLUT Display Calibration

HDR Pre-visualization (HLG, PQ, SLOG) and 3D LUT Color Management options for accurate reproduction of all standard sources (Rec709, EBU, SMPTE-C, BT.2020 and DCI) and custom color spaces.

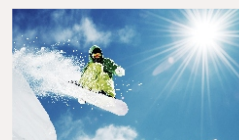
With our **tetrahedral LUT interpolation engine** of 4.913 points (17x17x17) that offers a higher degree of precision for accurate reproduction.



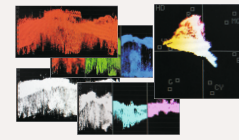
All monitors are factory calibrated using
LightIllusion's LightSpace CMS



12 bit image processing



3D to reproduce various colour spaces and DIT Luts



Waveform & Vectorscope



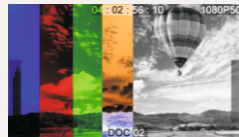
16 Channel Audio Level Meter



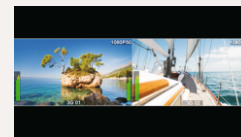
Focus Assist



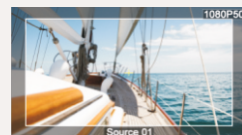
False Colour & Exposure Check



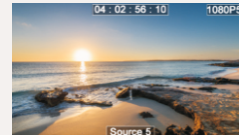
Monochrome, Blue Only,...



PaP - Picture and Picture



Markers



Timecode & Source Information



Tally and UMD



Alarms

No Input, Black Image, No Audio, Silence

SFP Slot

Adapt your monitors to your needs, select one of the optional SFP modules (optical fiber, HDMI,...) and add more inputs in the future! NOW IP SMPTE-2110 and IP SMPTE-2022-6 AVAILABLE!



Smart and Rugged Design

Soft buttons with dual functionality (fixed/configurable) and **encoder** to easily navigate through the OSD menu. Activate [Fn] Mode and access your favourite adjustments just with a press. Keys LED lights can be turned off if required for dark environments.

Compact and smart design with **down faced connectors** to **minimize depth** and **protect** connections from **wire pulling**.

Specifications

CM270P4K

Display Size	27" LED Backlight
Resolution	3840 x 2160
Viewing angle	178,178
Brightness	800 cd/m ²
Contrast	3000:1
Color Depth	10.7 B colors (10 bit)
12G/HD/SD-SDI inputs	2 x BNC Inputs with Active Loops Through
3G/HD/SD-SDI inputs	2 x BNC Inputs and 2 x BNC Input/Output Configurable
Supported resolutions:	1080p (60 / 59.84 / 50 / 30 / 29.97 / 25 / 24 / 23.98 / 25sF / 24sF / 23.98sF), 1080i (60 / 59.94 / 50), 720p (60 / 59.94 / 50), 480i (59.94), 576i (50)
HDMI input	1 HDMI (Not HDCP Support)
Audio IN	Embedded Audio. 16 Channels Audio Level Meters
Audio out	Analog Stereo (Phone Jack) and Stereo Speakers
UMD and Tally	On screen tally, and 16 characters UMD
Remote control	Ethernet
Chassis	Aluminium. Black Powder Coat
Dimensions	645 x 411 x 78 mm
Weight	TBD
Power Consumption	84W
Power supply	24V

Specifications are subject to change without prior notifications