

4 CRAFT

ONE | DUO | QUATRO

Modular Multiviewer

12G SDI, 3G SDI & HDMI



CRALTECH
BROADCAST | MONITORS | MULTIVIEWERS

Mix and Monitor **12G/3G/HD SDI** and **HDMI** sources in any size and position in a 4K Monitor or TV!



Most Flexible and Modular 4K Multiviewer to fit any installation

Introducing 4KCRAFT, the ultimate solution for creating custom, high-performance setups tailored to your specific needs. With the ability to handle up to 16 inputs, including 12G/3G/HD/SD SDI or HDMI, and up to 4 outputs (3G/HD/SD SDI) or a single 4K HDMI output, this cutting-edge technology allows you to display all your inputs simultaneously on-screen in any size and position.

Experience unrivaled convenience with up to 6 layouts that can be conveniently stored in the 4KCRAFT system, readily accessible through direct keys on the front keypad or our intuitive web-based Control Software. Take full control of your 4KCRAFT units remotely, effortlessly managing them with a tablet, phone, or PC.

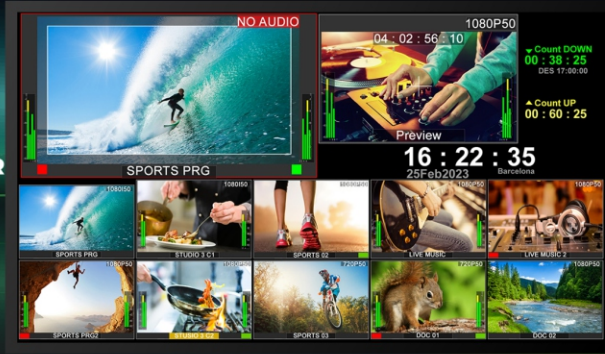
4KCRAFT not only delivers exceptional flexibility with up to 16 sources but also offers the unique capability to expand your installation by cascading up to 64 sources. Featuring our groundbreaking No Delay Cascade Engine.

Elevate your control room or production setup to unprecedented levels of performance and versatility with 4KCRAFT. Experience seamless integration, exceptional quality, and unparalleled convenience in a single, comprehensive solution. With compact and Lightweight 1 RU Aluminium design, 4KCRAFT is an energy-efficient Multiviewer that grant low temperature while working.

ONE

1 x 3G SDI Outputs & 1 x 4K HDMI Output

MONITOR



DUO

2 x 3G SDI Outputs & 1 x 4K HDMI Output

MONITOR 1



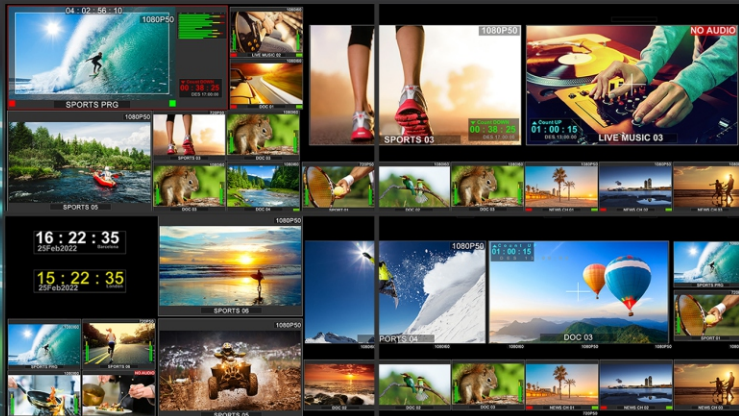
MONITOR 2



QUATRO

4 x 3G SDI Outputs & 1 x 4K HDMI Output

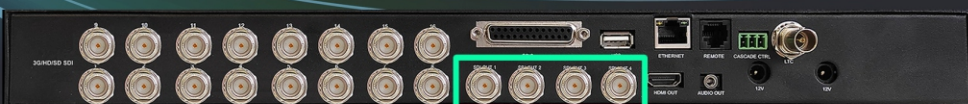
MONITOR 1



MONITOR 2

MONITOR 3

MONITOR 4



Flexible and Modular design

Mix 12G/3G/HD/SD SDI and HDMI sources

Unlock the potential of custom solutions with 4KCRAFT. Choose between 8 or 16 inputs, supporting a range of 12G/3G/HD/SD SDI or HDMI sources, and enjoy up to 4 outputs (3G/HD/SD SDI) or a single 4K HDMI output. With 4KCRAFT, you have the freedom to display all your sources on-screen simultaneously, effortlessly adjusting their size and position to suit your needs.

Experience unparalleled compatibility with 4KCRAFT support for any combination of SDI and HDMI signals, regardless of format or frame rate. Thanks to its top-of-the-line scaling and re-synchronization engine, you can expect exceptional image quality and seamless integration. Each view on the screen functions as an independent monitor, providing you with the utmost flexibility and control.

12G SDI

16 or 8 x 12G/6G/3G SDI Inputs



3G SDI

16 or 8 x 3G SDI Inputs



HDMI

16 or 8 x HDMI Inputs



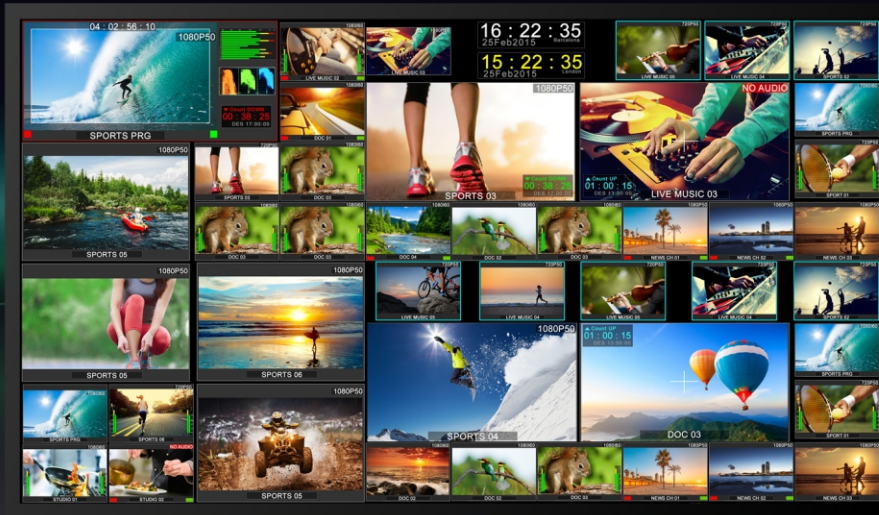
MIXED

8 x 12G or 3G SDI & 8 x HDMI Inputs



Up to **64 SDI or HDMI** sources using the unique **No Delay Cascade Capability**

What sets 4KCRAFT apart is the integration of our exclusive B2B-Link Communication System, enabling seamless cascading of equipment without introducing any additional delay. This innovative feature allows you to expand your system and display an increased number of sources without compromising performance.



MASTER



Slave 1



Slave 2



Slave 3



Slave 4



Control your **4KCRAFT** with Only One Touch!

With a Web Based easy to use control software, 4KCRAFT is easy to control from anywhere.

Control all your 4KCRAFT units from same tablet or mobile, or access them from different devices.

Maximum control & flexibility!

Specifications

| | |
|-------------------|--|
| Video Inputs | 8 or 16 (12G/6G/3G/HD/SD SDI or (3G/HD/SD SDI)) |
| 12G -SDI | SMPTE ST 2081 and SMPTE ST 2082 Format: 2160p(60/59.94/50/30/29.97/25/24/23.98) Cable length: 85m Belden 1694A |
| 3G-SDI | SMPTE 424M-2006 Level A, Format 1920x1080 (60, 59.94, 50) Cable length 85m Belden 1694A, BNC connector |
| HD-SDI | SMPTE 274M and SMPTE 296M, Formats 1080p (30, 29.97, 25,24, 23.98,30PsF, 29.97PsF, 25PsF, 24PsF, 23.98PsF) 1080i (60, 59.94, 50), 720p (60/59.94/50/30/29.97/25/24/23.98) Cable length 100m Belden 1694A, BNC connector |
| SD-SDI | SMPTE 125M/259M, Formats 480i (59.94), 576i (50) Cable length 250m Belden 1694A, BNC connector |
| HDMI | 1080p (60 / 59.94 / 50 / 30 / 29.97 / 25 / 24 / 23.98 / 25sF / 24sF / 23.98sF) 1080i (60 / 59.94 / 50), 720p (60 / 59.94 / 50) |
| Video Outputs | 1 x 4K HDMI Output (50,60 QUATRO) and (25,30 DUO and ONE) and 1080i (50,60), 1080p (25, 30, 50) QUATRO: 4 X 3G/HD SDI, DUO: 2 X 3G/HD SDI, ONE: 1 X 3G/HD SDI Outputs Format: 1080i (50,60), 1080p (25,30,50,60) |
| Audio Output | Audio Jack phone |
| GPIO Connector | GND contact closure |
| Ethernet | RJ-45 Connector |
| USB Connector | Upgrades |
| Chassis | Aluminium. Black Coat |
| Dimensions | 426 x 43,6 x 160 mm (1RU) |
| Power supply | 12V DC |
| Power consumption | 36W |

ONE

4KCRAFT-12G16O - 16 x 12G SDI inputs
 4KCRAFT-12G8O - 8 x 12G SDI inputs
 4KCRAFT-3G16O - 16 x 3G SDI inputs
 4KCRAFT-3G8O - 8 x 3G SDI inputs
 4KCRAFT-HD16O - 16 x HDMI inputs
 4KCRAFT-HD8O - 8 x HDMI inputs
 4KCRAFT-12G8HD8O - 8x12G SDI & 8xHDMI inputs
 4KCRAFT-12G8HD8O - 8x3G SDI & 8xHDMI inputs

DUO

4KCRAFT-12G16D - 16 x 12G SDI inputs
 4KCRAFT-12G8D - 8 x 12G SDI inputs
 4KCRAFT-3G16D - 16 x 3G SDI inputs
 4KCRAFT-3G8D - 8 x 3G SDI inputs
 4KCRAFT-HD16D - 16 x HDMI inputs
 4KCRAFT-HD8D - 8 x HDMI inputs
 4KCRAFT-12G8HD8D - 8x12G SDI & 8xHDMI inputs
 4KCRAFT-12G8HD8D - 8x3G SDI & 8xHDMI inputs

QUATRO

4KCRAFT-12G16 - 16 x 12G SDI inputs
 4KCRAFT-12G8 - 8 x 12G SDI inputs
 4KCRAFT-3G16 - 16 x 3G SDI inputs
 4KCRAFT-3G8 - 8 x 3G SDI inputs
 4KCRAFT-HD16 - 16 x HDMI inputs
 4KCRAFT-HD8 - 8 x HDMI inputs
 4KCRAFT-12G8HD8 - 8x12G SDI & 8xHDMI inputs
 4KCRAFT-12G8HD8 - 8x3G SDI & 8xHDMI inputs

